

Handling System for Rack Type Dishwasher Loading&Unloading Table, 1600mm

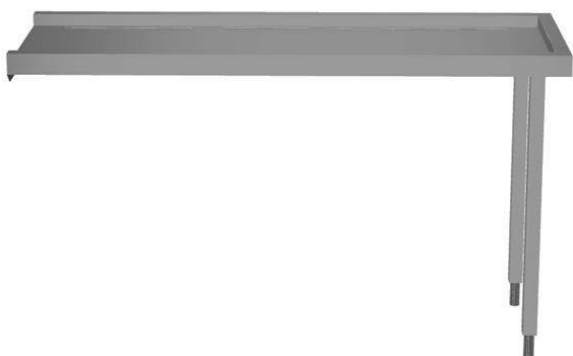
ITEM # _____

MODEL # _____

NAME # _____

SIS # _____

AIA # _____



865401 (BHRLU16)

Dishwasher table, loading/
unloading, 1600 mm

Main Features

- The table intended to connect directly with the rack type dishwasher on loading and/or unloading side.
- Suitable to be installed alone with the rack type dishwasher to save space.
- Supplied knocked-down and easy to assemble.
- Designed to transport 500x500 mm dishwashing baskets.

Construction

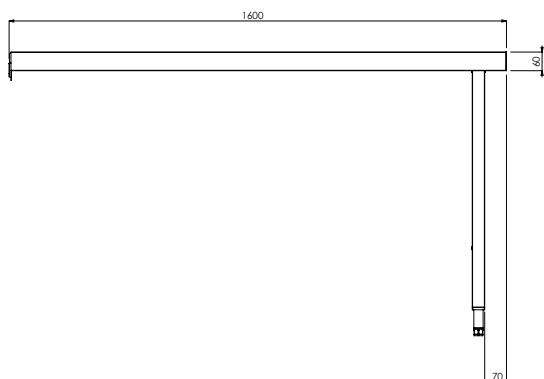
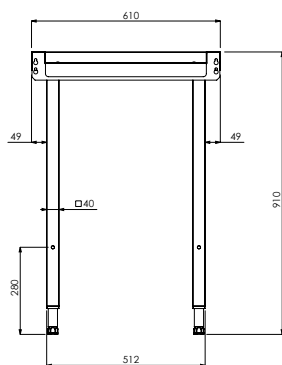
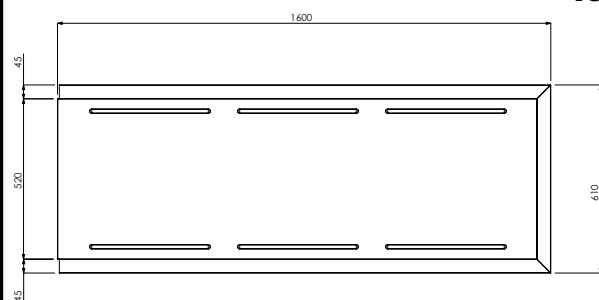
- 304 AISI stainless steel construction throughout.
- Stainless steel feet 50 mm adjustable in height to ensure that tables drain back into the dishwasher.
- Deep anti-drip profiles completely folded with lower edge for safe and easy cleaning.
- All surfaces smooth with polished finish.
- 40x40 mm square tubular legs in AISI 304 stainless steel.
- Optionally equipped with plain undershelves and end limit switch.
- To be secured to the dishwasher and fitted with one pair of legs at the other end.
- Optional splash back available to align the table with the rack type dishwasher and to prevent water spatter.

Optional Accessories

- 2 legs for floor mounted storing shelf PNC 855296 ☐
- End limit switch for tables PNC 865385 ☐
- Floor fastening kit for 2 square legs PNC 865386 ☐
- Removable bridge table, 800 mm PNC 865418 ☐
- Removable bridge table with hole, 800 mm PNC 865419 ☐
- Wall/floor mounted storing shelf, 1600 mm PNC 865421 ☐
- Small splashback (to be aligned with the back of the Rack Type Dishwasher), 1600 mm PNC 865424 ☐
- Undershef for dishwasher table, 1600 mm PNC 865482 ☐

APPROVAL: _____

Handling System for Rack Type Dishwasher Loading&Unloading Table, 1600mm

Front

Side

Top


Key Information:

External dimensions, Width:

865401 (BHRLU16) 1600 mm

External dimensions, Depth: 610 mm

External dimensions, Height: 910 mm

Net weight: 17 kg